

teach@home

Literacy Activities

Grade 5, Week 1

Context Clues & Root Words

Day	Topic	Pages
Day 1	<u>Homonyms</u>	2-3
Day 2	<u>Context clues</u>	4-5
Day 3	<u>More context clues</u>	6-7
Day 4	<u>Prefixes and suffixes</u>	8-9
Day 5	<u>More prefixes and suffixes</u>	10-11

The Answer Key for this week's lessons can be found at:



**Printable
Answer Key**

hand2mind-link.com/L5-AK-W1



Homonyms are words that are spelled the same but have different meanings in different **contexts**. For instance, the word *mean* is a homonym.

- Alex was *mean* to me.
- I *mean* you should pick up 5 straws.

Set a timer for 10 minutes. Think of as many homonyms as you can and write them in the first column. For each homonym, write a sentence using one meaning of the word, and then write a second sentence using another meaning for the word.

mean	1. Alex was <i>mean</i> to me. 2. I <i>mean</i> you should pick up 5 straws.
	1. 2.
	1. 2.
	1. 2.
	1. 2.
	1. 2.
	1. 2.
	1. 2.
	1. 2.
	1. 2.



Context clues are words in a sentence that give hints about a word's meaning. You can use **context clues** to figure out the meanings of unknown words.

Read the sentences. Write what the word in **bold** means. Use the answer box to help you. Circle the **context clues** in each sentence that help you understand the meaning.

Answer Box	
very big	interested in something
not occupied	important or special
free of clutter	further past
very tired	

1. There is a playground out **beyond** the soccer field.

2. Because she was **curious**, Alice followed the talking rabbit down the rabbit hole.

3. My friend Liam keeps his desk very **tidy**, but mine is a mess.

4. After the marathon, Ada was so **weary** she could hardly walk.

5. The **precious** stuffed bear was given to me by my grandmother before we moved. I can't sleep without it.

6. There is a **vacant** lot next to our house. The city council is thinking of building a park in the space there.

7. When we went to the beach, seeing the **vast** ocean extend all the way to horizon made me feel small.



Day 2 (continued)

Read the sentences. Write what the word in **bold** means.
Circle the **context clues** in each sentence that help you understand the meaning.

1. When Mia fell off the swing, she was **fortunate** she didn't break her arm.

2. Because I studied for the test, all the answers seem very **obvious**.

3. After playing the soccer game, it took two bottles of water to **quench** my thirst.

4. There was a scream of **terror** when the wasp flew into the classroom.

5. I change the clock after Daylight Savings, so it shows the accurate time. It is important to be **accurate**, or you will make careless mistakes.

6. The package with 64 crayons had a great **variety** of color.

7. When the curtain opened, it **revealed** a beautifully painted set.



Context clues are words in a sentence that give hints about a word's meaning. You can use **context clues** to figure out the meanings of unknown words.

Read each sentence below. Circle the correct meaning of the underlined word.

- The students assembled in front of the school to wait for their bus.
 - yelled
 - skipped
 - lined up
- Jose's story was so brief it took him only a minute to read it aloud.
 - short
 - long
 - exciting
- Kris murmured a reply, but I couldn't hear it.
 - screamed
 - yelled
 - said softly
- Our club donates food and toys to needy families every year.
 - buys
 - gives away
 - eats
- It was sweltering outside, so I bought some ice cream to cool off.
 - hot
 - chilly
 - raining
- It seldom rains here, so I'm surprised it's pouring today.
 - frequently
 - not often
 - usually
- The garbage had a bad odor, so I pinched my nose when I took out the trash.
 - smell
 - color
 - sound
- The child clapped her hands with glee when she got her gift.
 - sadness
 - anger
 - joy

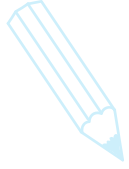


Day 3 (continued)

Read the story. Write the meanings for the words in **bold**. Circle the **context clues** in each sentence.

James Strom, the **master** detective, walked into the small shop. He strolled over to the clerk. The clerk **indicated** the broken case where the watches had been. Strom saw the prices on the empty shelves. He knew he couldn't **afford** to shop here on his salary. As he **focused** on the clerk's story, he also **observed** some pieces of glass on the clerk's sleeve. He asked a couple of questions. Suddenly, Strom said, "Cuff him. The door was not broken. The alarm did not go off. Only the case was broken, and the clerk has glass on his sleeve. I must **conclude** that he stole the watches."

1. master _____
2. indicated _____
3. afford _____
4. focused _____
5. observed _____
6. conclude _____



A **prefix** is a word part added to the beginning of a root word. A **suffix** is a word part added to the end of a root word.

Cut out the words in the Word Bank. Sort the words into the appropriate column. Glue the words in their appropriate column.

Words With a Prefix		Words With a Suffix	
Word Bank			
misinform	player	underserve	bicycle
quadrilateral	irregular	fearless	unlock
agreeable	edible	presale	dislike
childish	defrost	useful	submarine



Day 4 (continued)

Read the root word. Then read its definition. Add the prefix or suffix that makes the word match its definition.

Word	Definition
1. shoe_____	without shoes
2. _____forgiven	not forgiven
3. _____start	to start again
4. understand _____	possible to understand
5. _____way	an underground train
6. _____appear	to stop appearing
7. taste_____	with a lot of taste
8. _____view	view ahead of time



A **prefix** is a word part added to the beginning of a root word.

A **suffix** is a word part added to the end of a root word.

Match the prefixes in the Prefix Bank with each word. Write the new words in the space provided. You may use each prefix more than once.

Prefix Bank		
tele-	inter-	mis-
over-	super-	un-

1. direct _____

2. scope _____

3. behave _____

4. night _____

5. likely _____

6. cover _____

7. national _____

8. hero _____

9. personal _____

10. sonic _____



Day 5 (continued)

Use the prefixes & suffixes in the Word Bank to write definitions for each word in the space provided.

Word Bank		
ex: out	marine: sea	sub: under
form: shape	photo: light	tele: distant
graph: draw, record	port: carry, bring	trans: across
inter: between	rupt: break, burst	uni: one
logy: study of	spect: see	

1. biology _____

2. interrupt _____

3. inspect _____

4. photograph _____

5. uniform _____

6. transform _____

7. submarine _____

8. export _____

9. telegraph _____